

# 2021 IMPACT REPORT

VIBRANT REEFS  
THRIVING COMMUNITIES

OneReef





## Our Mission

We partner with island communities to combine traditional stewardship and modern resources to protect coral reefs.

### BOARD OF DIRECTORS

John Dawson, *Chair*

Lida Teneva, *Treasurer*

Bernie Tershy, *Secretary*

Igor Korneitchouk, *Board Member*

John Reid, *Board Member*

Mary Gard Jameson, *Board Member*

### STAFF

#### US Team:

Christopher LaFranchi, *Founder and CEO*

Kiran Jadhvani, *Operations Manager*

Eva Villanueva, *Administrative Coordinator*

#### Micronesia Team:

Wayne Andrew, *Senior Director, Micronesia*

Madelsar Ngiraingas, *Managing Director, Micronesia*

Angel Jonathan, *Community Partnerships Coordinator, Pohnpei*

Charley Patris, *Surveillance and Stewardship Mentor, Palau*

Akillino Albis, *Traditional Stewardship Mentor, Palau*

Obechou Andres, *Operations Coordinator, Palau*

Ngirur Daysha Adelbai, *Operations Coordinator, Palau*

Clivia Masami, *Community Partnerships Coordinator, Palau*

Briana Takada, *Visual Information Specialist, Micronesia Program*



## A MESSAGE FROM THE USA



CHRIS LAFRANCHI

**The pandemic taught us to surf the unsurfable.** Maintaining a calm focus and carefully timing aspects of nature over which you have no control are critical. What I learned surfing applies to OneReef. Still, if someone had asked me for a progress outlook when the pandemic was claiming millions of lives, I would have shuddered and said we would slow by 50%.

**I would not have predicted our first seven-figure gift, three new community partnership agreements, launching a National Center for Traditional Learning, and an offer by National Geographic to feature our work in their print magazine. All that happened because of the tremendous people we work with at OneReef.**

Because of our people, the pandemic brought unity and hastened action. I saw community members rising to meet opportunities – to protect the environment, of course, but also to respect their ancestral knowledge alongside science – and teach their children about traditional practices.

The people who fund OneReef are a special breed: trusting, bold, and patient. Their extraordinary unrestricted funds give us the freedom to focus where we know we'll get the most impact. They trust our communities and their generational knowledge. They trust me to stick to our mission and rely on our science partners.

Our first seven-figure donation elevates the spirits of our partners in remote places like Pohnpei, where a pandemic lockdown prevents travel in or out. Imagine you live on a remote island, where your only contact with outsiders is through Zoom meetings. Just when it gets surreal, you learn that a partner on the other side of the Pacific makes a transformational donation, elevating your commitment to protect your place from illegal fishing.

OneReef is all about these moments. People from different backgrounds working “as one” to create progress unattainable by any one faction. Without knowing each other. Making sense of the world in contrasting visions – but with a singular purpose. I saw it in 2021. Now I'm seeing it expand.

We recently formed a “radical collective” with two organizations in Melanesia and Polynesia, like-minded organizations building solutions founded on the traditions of Oceania combined with modern technology. Our fellow collaborators are packed with talent and proof-of-concept success in Tahiti and Fiji. We now have two new channels to scale impact!

Not long ago, I would have seen that expansion as an unrideable wave. Despite a worldwide pandemic or perhaps because of it, the tremendous people we work with have shown us how to surf the unsurfable.

Christopher LaFranchi  
Founder & CEO

## A MESSAGE FROM MICRONESIA

**In the ocean, Pacific peoples find meaning.** The world stage underscores the environmental stewardship of Indigenous peoples, and their proven mitigation and adaptation experiences. As island nations, the ocean has always been integral to our survival, sense of identity, and connection to the world.

*The ocean offers powerful healing benefits to a damaged planet and chaotic world. It provides inspiration, motivation, and tranquility.*



WAYNE ANDREW

Pacific peoples recognize and honor the relationships between the ocean, biodiversity, and climate that profoundly shapes our way of life and culture. Our traditional ways, alone, can no longer address the rapid changes to our environment that we experience.

Palau's President, Surangel Whipps, Jr. asserts that we are not only facing a climate crisis, but we are also confronting an ocean, biodiversity, and humanitarian crisis. For island nations, these global crises threaten our very existence – our home, our lives, and our identity as a people.

Swift collective action is critical. But to take appropriate action, we need empirical evidence to guide decision-making. In the past, we relied on our own scientists – the fishers, farmers, and hunters in our communities. With our new social systems, these specialized tradesmen do not get enough time in the environment to collect the data that we need to make good decisions. Our local communities increasingly rely on modern science to help us understand what is happening in our environment.

*Thanks to OneReef's partnership with the Scripps Institution of Oceanography, our own people can now collect images and data required to help our communities understand how rapidly our marine ecosystems are changing. With our traditional knowledge, this modern science and technology is helping our traditional and political leaders identify the most suitable management solutions.*



MADELSAR NGIRAINGAS

OneReef provides a platform for our local communities to share the daily realities we face as traditional stewards in a rapidly changing world. With our global partners, we wish to inspire hope and rally the international community to work together to find solutions that address the ocean-climate-biodiversity crisis.

A handwritten signature in blue ink that reads "Wayne".

Wayne Andrew  
Co-director, Micronesia

A handwritten signature in blue ink that reads "Madelsar".

Madelsar Ngiraingas  
Co-director, Micronesia





# 2021 HIGHLIGHTS

Our Mission In Action





THREE NEW  
COMMUNITY  
PARTNERSHIP  
AGREEMENTS IN  
PALAU

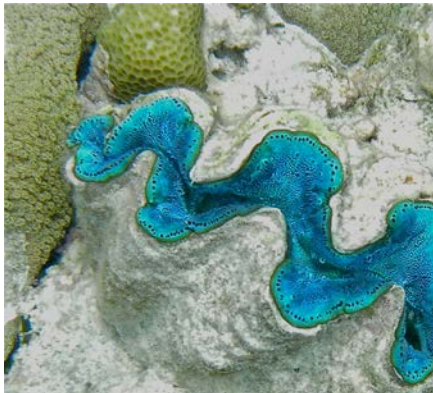


NEW PROCESS  
CATALYZES PUBLIC  
MATCHING: OVER  
\$90,000 IN PUBLIC  
FUNDING IN FIRST  
YEAR

IN DEVELOPMENT:  
A NATIONAL CENTER  
FOR TRADITIONAL  
LEARNING  
TO SUPPORT  
ENVIRONMENTAL  
STEWARDSHIP  
—WITH PALAU  
GOVERNMENT



FIRST SEVEN-FIGURE  
GIFT TO SUPPORT  
LONG-TERM CORE  
OPERATIONS



WORK WITH  
THE SCRIPPS  
INSTITUTION OF  
OCEANOGRAPHY  
TOWARD A  
MACHINE LEARNING  
ALGORITHM WHICH  
WILL GREATLY  
REDUCE DATA  
EXTRACTION TIME



AGREEMENT  
WITH NATIONAL  
GEOGRAPHIC TO  
FEATURE OUR WORK  
IN THEIR PRINT  
MAGAZINE



# The Year by the Numbers



**64,501**

hours of on-the-water monitoring and surveillance supported

**34**

projects co-financed, with added leadership, technology and science support

**591**

units of surveillance and monitoring equipment supplied

**35**

reef areas re-imaged to monitor ecological health status

**115**

new community rangers trained on enforcement



# What Distinguishes Us

We understand that climate adaptation is as much about community resilience and cultural integrity as it is about biodiversity conservation.

# Next Five Years

OneReef is expanding with an additional 38 community partnerships, increasing the area managed to 3+ million acres. This expansion will transfer centuries-old traditional knowledge from elders to youth, and establish peer-to-peer exchanges throughout the region.







# BUILDING SOLUTIONS-BASED PARTNERSHIPS





# New and Renewed Agreements Signed in 2021

- 🐠 Our agreement with the Helen Reef community was renewed, with an additional agreement to build a Traditional Learning Center on site.
- 🐠 A new agreement was forged with Uchul a Chei Fishers who will produce the first traditional fishing guide for Palauans for use in Traditional Learning Centers.
- 🐠 With approval from the Ministry of Justice of Palau, we signed an agreement with Koror State to conduct surveillance using a drone in the UNESCO Heritage classified Rock Islands.
- 🐠 Two new Community Partnership Agreements with Kayangel and Ngardmau states in Palau.
- 🐠 Our first 3-way agreement was signed with Sonsorol and Ngarchelong to formalize collaboration with OneReef and Helen Reef.
- 🐠 An MOU was signed with Palau's Ministry of Human Resources, Culture, Tourism and Development for our first National Learning Center.



Left to right: OneReef Micronesia Senior Director Wayne Andrews, Kayangel State Speaker Edwin Chiokai, Governor Richard Ngiraked, and Floor Leader Asailee Yamada

*OneReef's Wayne Andrews signs new Community Partner Agreement with representatives from Kayangel State. This Atoll is about 27 miles north of Ngarchelong State which borders the protected areas of Ngardmau State. Now with three Community Partners in the Northern Reefs, our overall effectiveness of surveillance and reef monitoring will increase.*



# Our Community Partners Re-asserting Agency Over Their Places

- 🐠 In 2021, six poaching vessels were apprehended.
- 🐠 We provided Ngarchelong Rangers in Palau with a new boat engine, GoPro, global positioning systems (GPS), and binoculars, as well as basic surveillance kits to new teams in Pohnpei (Nanwap, Nahtik, and Ant Atoll).
- 🐠 Our basic kits include GPS, cameras, and radios in a protective Pelican case, and life jackets.
- 🐠 Rangers in Nanwap and Nahtik received a DJI Mavic 3 drone and surveillance training from our partners at the Conservation Society of Pohnpei.



*Top: Ngarchelong State Rangers at the Northern Reef Marine Managed Area undergoing OneReef's signature training program geared towards safely approaching poachers and issuing citations.*

*Middle: OneReef's Madelsar Ngiraingas and Ngirur Daysha Adelbai supply basic surveillance kits to Ngarchelong State Rangers. Bottom: OneReef's Charley Patris with members of the Helen Reef Resource Management team conducting an assessment of their facilities, equipment, and supplies, and providing refresher training on surveillance and enforcement for their Rangers.*



# Reef Health Data Informs Stewardship



Trained and equipped OneReef partner communities continued with imaging existing and new reef sites in the states of Koror, Ngarchelong and Pohnpei, providing evidence for improved marine management plans.

Prior to the shutdown, OneReef and partners from the Scripps Institution of Oceanography had provided our Ant Atoll partner community in Pohnpei with equipment and training in photogrammetry technology. Angel Jonathan, OneReef Community Partnerships Coordinator at Conservation Society of Pohnpei was among the team trained. Angel and his team were able to successfully train other community members to continue imaging sites in Ant Atoll, a UNESCO World Biosphere Reserve, in Take and No-Take Zones that were last imaged by Scripps and OneReef in 2018.

With local capacity built to collect a steady time series of data, OneReef and Scripps continue to evaluate reef health and provide the evidence required for improved marine management plans.

*Ngarchelong State Ranger Raylan Roman receives underwater training with novel monitoring technology from Scripps Institution of Oceanography.*

# Ridge-to-Reef Project Founded in Traditional Knowledge

-  We launched the Ngarchelong Forestry Project, our first 'ridge-to-reef' project to protect our reefs from soil runoff and sediment. Community members conducted a soil assessment, constructed a plant nursery, compost shed, and sediment traps, and reforested upland areas.
-  OneReef expanded its coastal resource protection in Ngarchelong with a grant from the U.S. Forest Services Pacific Islands Forest Restoration Initiative. About 100 community members came together to construct a plant nursery, compost shed, and sediment traps, and to reforest upland areas to prevent soil from washing into the ocean and smothering precious mangrove and coral reef ecosystems.
-  The Ngarchelong Forestry Project provided invaluable opportunities for the next generation of Micronesian stewards to learn from their Elders. Together they are now monitoring the health of the reforested land in addition to their coastal mangroves and coral reefs, collecting and providing the information we need to help communities scale efforts to address threats to their coastal resources.



*Top: OneReef's Ngarchelong Forestry Project provided great opportunities for youth. Middle: Our Traditional Stewardship Program teaches Palauan language. Bottom: At Helen Reef, youth planted coconut seedlings that will soon provide precious food, shelter, and erosion control.*



# Educating and Inspiring the Next Generation of Stewards

We held our first Traditional Stewardship After-School Programs and Summer Camps, connecting elders with youth to catalyze traditional knowledge and values with science and technology.



This year, youth in Hatohobei, Sonsorol, and Koror States learned how to become effective stewards of their environment. They learned about traditional fishing and farming methods, sea voyaging, and critical survival skills including tying knots and weaving thatched sails and roofs from coconut fronds. They learned to build traditional canoe houses to serve as their Learning Centers, and how to generate digital 3D models of their islands. They learned about the importance of Marine Protected Areas, their rules and regulations, surveillance and enforcement, and their cultural significance as fishing grounds of their ancestors.

Elders worked with the children to teach the foundational values of stewardship: respect and humility – which in the local language is “haparue ma hawehahi,” and translates to “thank you.”

Uchul a Chei Fishers (UACF), a membership-based organization for Palauan fishers, have extensive life experiences on the ocean. But due to modern influences, they are part of a declining group of Palauan fishers trying to uphold traditional knowledge, practices and stewardship principles. They feel a sense of urgency to transfer their cultural knowledge to young Palauans so they can continue to safeguard the ocean, promote active living, consume healthy diets, and preserve their cultural identity. The UACF-OneReef partnership has helped these fishers establish a learning center dedicated to the application of traditional fishing knowledge, and to develop the first Palauan Fishers Manual documenting traditional navigation, conservation, and fishing principles and practices.

# The Power to Reclaim Reefs and Fisheries

## **Unbreakable connections with place, community, and ancestry underpin oceanic traditions.**

Drawing on traditions, five village chiefs forged a new solution in 2021 that harmonizes their unified vision for conservation and resource management. To start, the five chiefs established the MLMDA, an NGO in the Federated States of Micronesia (FSM). That would not have been possible without the championship of a ranking traditional leader, Mr. Honer Weital. This is the power of traditional leadership at work.

## **But outstanding leadership by itself is not enough. Financial and technical resources are needed.**

OneReef, the FSM Global Environment Facility, and the Conservation Society of Pohnpei provided training on enforcement and enforcement of environmental laws. And in the process, the five chiefs, working with OneReef, secured matching funds from FSM's Congress and instituted a process for public-private support of traditional management.

## **Equipment, technical support, and financial resources were provided to 23 Community Conservation Officers (CCOs) at the Nanwap Community Marine Protected Area (MPA).**

Additional public monies were committed. In total, MLMDA leveraged \$91,000.00 in committed funding support from OneReef and public sector partners. Plus, with partners including the Pohnpei State Office of Fisheries and Aquaculture, new income-generating activities in farming corals, sponges, giant clams, and fish are helping to support ten CCOs, their families, and the community.

The word “Nanwap” characterizes the traditional ways the coastal villages of Metipw, Lukop, Mesihsou, Dolopwhail, and Aparahk share and co-manage their local resources, safeguarding this special place with traditional stewardship shaped by intimate knowledge and kinship to the environment.





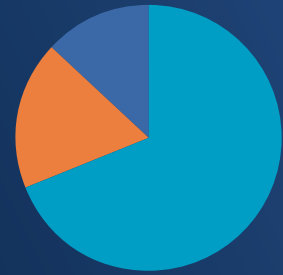
# Financial Health



## 2021 REVENUE

<b>64.71%</b>	Unrestricted donations and grants	\$1,031,102.36
<b>29.23%</b>	Restricted donations and grants	\$465,811.64
<b>5.6%</b>	In-Kind revenue	\$89,169.50
<b>0.46%</b>	Interest income	\$7,402.10

**TOTAL REVENUE** **\$1,593,485.60**



## 2021 EXPENSES

<b>69%</b>	Programs	\$560,736.54
<b>18%</b>	Fundraising	\$146,729.12
<b>13%</b>	Administration	\$105,341.39

**TOTAL EXPENSES** **\$812,807.05**

## REVENUE BY CATEGORY

<b>48.49%</b>	Foundations	\$772,700.00
<b>28.39%</b>	Grants	\$452,443.13
<b>16.96%</b>	Individuals	\$270,245.54
<b>6.16%</b>	Other (PPP loan, Interest Income)	\$98,097.00



Complete financial reports are available upon request.  
 OneReef Worldwide Stewardship is recognized by the Internal Revenue Service as a 501(c)3 organization, #46-4293324.

Thank you to our funders, collaborators, and partners for supporting our conservation efforts in 2021.

## COMMUNITY PARTNERS

Ant Atoll, Nanpei Estate  
*Pohnpei, Federated States of Micronesia*

Dehpehk Takaieu Marine Sanctuary, Dehpehk and Takaieu communities  
*Pohnpei, Federated States of Micronesia*

Helen Reef Atoll, Hatohobei State Government  
*Hatohobei State, Republic of Palau*

Kayangel, Kayangel State Government  
*Kayangel State, Republic of Palau*

Nahtik Marine Sanctuary, Mwoakot, Soamwoai, Enipein Powe, and Enipein Pah communities  
*Pohnpei, Federated States of Micronesia*

Nanwap Marine Sanctuary, Lukop, Aparahk, Mesihsou, Metipw, and Dolopwhail communities  
*Pohnpei, Federated States of Micronesia*

Nimpal Chanel Marine Conservation Area, Kaday and Okaw communities  
*Yap, Federated States of Micronesia*

Ngardmau, Ngardmau State Government  
*Ngardmau State, Republic of Palau*

Ngulu Atoll, Nimpal Marine Protected Area, Kaday and Okaw communities  
*Yap, Federated States of Micronesia*

Northern Reef Marine Managed Area, Ngarchelong State Government  
*Ngarchelong State, Republic of Palau*

Pakin Atoll, Pakin community  
*Pohnpei, Federated States of Micronesia*

Palikir Pass Sanctuary, Palikir community  
*Pohnpei, Federated States of Micronesia*

Sapwtik Lenger community  
*Pohnpei, Federated States of Micronesia*

Sonsorol Island, Pulo Anna Island, Merir Island, Fanna Island, Sonsorol State Government  
*Sonsorol State, Republic of Palau*

## INSTITUTIONS

Conservation Society of Pohnpei

Ebiil Society

Hatohobei Organization for the People and the Environment

Kaday Community & Okaw Community (KC & OC)

Koror State Govt Conservation & Law Enforcement

Marcela Foundation

Micronesia Challenge

Micronesia Conservation Trust

Micronesia in Island Conservation

Pacific Islands Managed and Protected Areas Community

Palau Conservation Society

Palau International Coral Reef Center

Palau Visitors Authority

Protected Seas

Scripps Institution of Oceanography

The Nature Conservancy

Yap Community Action Program

## MAJOR FUNDERS

Alex C. Walker Foundation

Anonymous

Anonymous

Anthropocene Institute

Blue Climate Initiative

Beagle Charitable Foundation

Beyster Family Foundation

Charles Knowles

Dawson Family Fund

Fuller Family Foundation

Global Conservation

Jameson Foundation

Morgan Family Foundation

Mulago Foundation

National Geographic

Nia Tero

National Oceanic and Atmospheric Administration (NOAA)

Perpetual Family Foundation

Pilot House Philanthropy

Posey Family Fund

Sall Family Foundation

Steve Strachan

United States Agency for International Development (USAID)

Warmenhoven Family Foundation

Wilsdorf Mettler Future Foundation

### Suparna Vashisht

OneReef recognizes Suparna Vashisht for her pioneering efforts to successfully brand and position OneReef. Suparna first contacted us more than five years ago expressing her desire to volunteer. She found success without a secure budget or dedicated staff, steadily growing her contributions to cross-cultural communications and training new staff. Her leadership embodied grit and a fearless predilection toward posing the hard questions required to pioneer something new. You touched us emphatically, Suparna, and we wish you well in your next endeavor.



# OneReef

Vibrant Reefs, Thriving Communities



[www.OneReef.org](http://www.OneReef.org)

United States office:  
114 Oak Knoll Drive  
Santa Cruz, California 95060  
Ph. 415.602.7302

Micronesia office:  
PO Box 475  
Koror, Republic of Palau 96940  
Ph. +680.488.4361  
[facebook.com/OneReefMicronesia](https://facebook.com/OneReefMicronesia)