

Oceania Collective Action Statement

Pathway to Pacific Resilience through
Enhanced Community-Driven Actions



The **Oceania Collective** is a coalition of Pacific Island partners, including LMMA, the Rahui Center, OneReef Worldwide Stewardship, and others, united in their commitment to strengthening community-driven solutions for ocean-climate resilience. Guided by shared values, we uphold principles of community-centered action, stewardship, integrity, equity, respect, humility, and unity—ensuring that our work remains inclusive, impactful, and deeply rooted in the needs and wisdom of Pacific communities.

Photo: Kiliiii Yuan

As the Oceania Collective,

We recognize that Pacific Communities are critical to the success of ocean-climate solutions. This means:

1. Communities must have appropriate sovereignty, agency, and control over their natural heritage. The agency of the communities should be sanctioned by the appropriate authorities, which may vary depending on location, and should strive to extend to the EEZ boundaries and beyond.
2. The views, perspectives, and traditional and ancestral knowledge and practices of the communities are imperative to the design, development, execution, and ongoing adaptation of holistic solutions.
3. The active, continuous, and intentional engagement of communities is crucial in achieving national, regional, and international commitments - like 30x30.

Hence, we intend to strengthen Partners and the Communities they support to drive lasting change.

1. Partners are recognized for their critical role in supporting communities, including the scaling of community-driven solutions and policy changes.
2. Partners must be adequately resourced to provide continuous support to communities.
3. Partners must continually learn and adapt to the evolving landscape and context of stakeholders.

Therefore, the Oceania Collective commits to a standard of practice that increases effectiveness, and leads to impactful, scalable, and adaptive solutions. Our collective efforts must include:

1. Ensuring communities are co-creators, co-designers, and co-managers of data systems, and that monitoring processes are relevant, accessible, and actionable.
2. Bridging traditional systems with scientific and technological knowledge and practices.
3. Adopting a comprehensive impact reporting approach that prioritizes action-oriented and evidence-based outcomes, includes measurable benefits to all stakeholders, and enables tracking and sharing of progress for continuous improvement and amplification of successful solutions.
4. Investing in strategic planning and securing multi-year funding tied to clear goals, to provide stable and uninterrupted support to communities.
5. Strengthening partners by improving talent acquisition and retention, providing on-the-job learning opportunities, and continuously developing skills and capabilities.
6. Streamlining processes, optimizing resource use and governance structures, and adapting to diverse local contexts, in order to enhance effectiveness.
7. Upholding the highest standards of transparency and accountability by openly sharing information about our operations, decisions, and performance, while taking responsibility for our actions and ensuring that all stakeholders can hold us accountable, in order to foster a culture of mutual trust, understanding and reliability.
8. Nurturing a network that enables sharing, coordination, and scaling amongst communities and partners.

Together, the **Oceania Collective** shall honor the resilience of Pacific peoples and build a thriving, collaborative, and sustainable future for all.

The **Oceania Collective** currently has **7** partners in **7** countries spanning across the Pacific who collectively have **decades** of experience in successful community-led ocean and fisheries management, as it expands rapidly across the Pacific.

Palau

OneReef Micronesia

French Polynesia

Rāhui Center

Fiji

Locally Managed Marine Area Network

Kiribati

Oceans for I-Kiribati

Nauru

Nauru Fisheries and Marine Resources Authority

Federated States of Micronesia

Conservation Society of Pohnpei

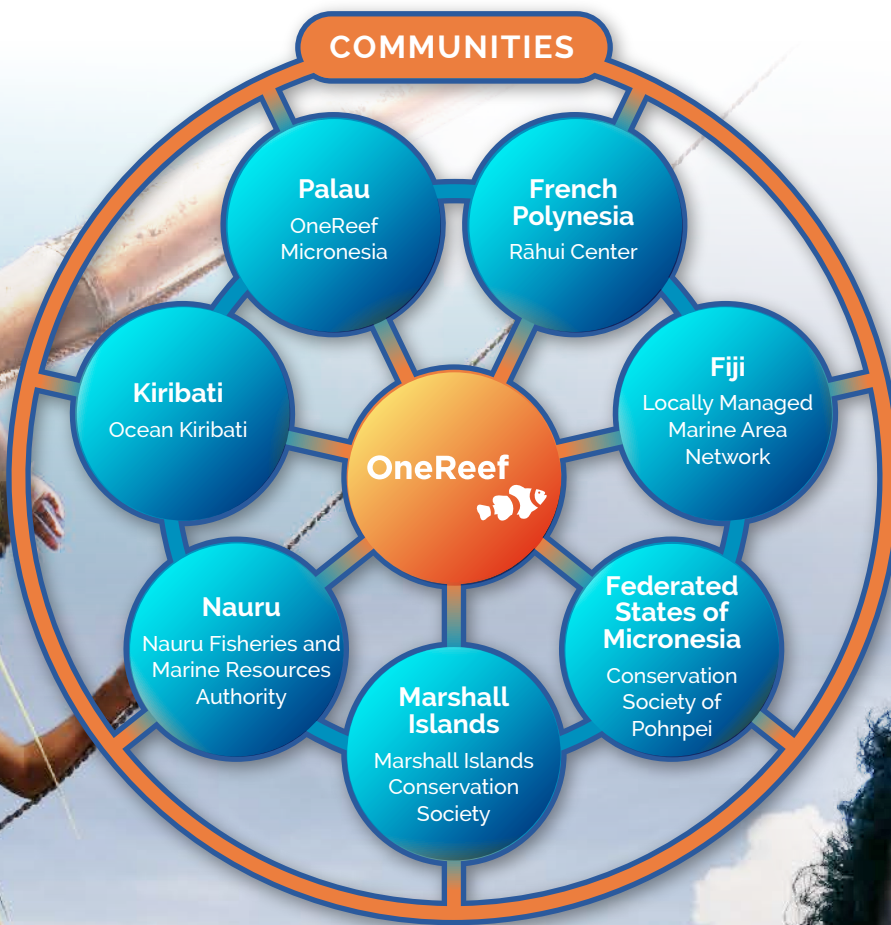
Marshall Islands

Marshall Islands Conservation Society



Oceania Collective

Pacific Frontline Partners United for Ocean-Climate Resilience



OneReef Roles:

- Impact Multiplier
- Convenor
- Fundraiser
- Project manager
- PR/marketing
- Org support

Partner/Member Roles:

- Support communities' key stewardship priorities
- Share knowledge and expertise
- Advocate for the Collective
- Lead or co-host events
- Co-develop the Collective's governance and strategy

Impact (2025-2027):

- Increased funding to support communities' key stewardship priorities
- Stronger org health
- Increased awareness of the Collective
- Recognition of local communities' role in ocean conservation
- Frontline communities are leading the way in ocean-climate solutions

Join the movement and support the Collective!

donna@onereef.org or martin@onereef.org